

Boletim BiblioCovid

Boletim BiblioCovid v.1n.1, agosto 2020 | COVID-19 E OS PROFISSIONAIS DE SAÚDE

Boletim destinado a apresentação de estratégias e artigos científicos sobre temas relacionados à Covid-19.

Gostaria de um boletim com sua temática?

Sugira novos temas aqui: [BiblioCovid_sugestao_de_tema](#)

COVID-19 E OS PROFISSIONAIS DE SAÚDE: Impactos na saúde física e mental dos profissionais de saúde no enfrentamento da Covid-19



Vocabulário controlado

MeSH – Medical Subject Headings (NLM/NIH)

Bases utilizadas

PUBMED/Medline

Termos Utilizados



Health personnel

Healthcare workers

Healthcare providers

Health professionals

Medical staff

Nursing staff

Physician

Nurse

Hospital

Clinic

Healthcare

Health care

ICU

Intensive care units

Intensive care

Worker

Staff

Personnel

Mental Health

Stress, Psychological

Adaptation, Psychological

Fatigue

Emotions

Stress

Emotion

Physical symptoms

Psychological impact

Psychological distress

Physical

Covid-19

Covid19

Novel coronavirus

Coronavirus disease 2019

Estratégias de busca

“health personnel”[MeSH Terms] OR “healthcare workers” OR “healthcare providers” OR “health professionals” OR “medical staff” OR “nursing staff” OR physician*[TIAB] OR nurse* [TIAB] OR ((hospital*[TIAB] OR clinic*[TIAB] OR healthcare OR “health care” OR ICU OR “intensive care units”[MeSH Terms] OR “intensive care”) AND (worker OR staff OR personnel) AND (Mental Health [MESH] OR Stress, Psychological[MESH] OR Adaptation, Psychological[MESH] OR Fatigue[MESH] OR Emotions[MESH] OR “emotion*” OR stress OR “Physical symptoms” OR “psychological impact” OR “psychological distress” OR “Physical”) AND (Covid-19 OR Covid19 OR “novel coronavirus”[TIAB] OR coronavirus disease 2019 OR “nCov” OR (“coronavirus” AND 2019[TI])).

Seleção dos dez artigos mais relevantes segundo critérios da Base de dados PUBMED/ Medline incluído o filtro “Acesso aberto”.

1. Factors Associated With Mental Health Outcomes Among Health Care Workers Exposed to Coronavirus Disease 2019

Importance: Health care workers exposed to coronavirus disease 2019 (COVID-19) could be psychologically stressed. **Objective:** To assess the magnitude of mental health outcomes and associated factors among health care workers treating patients exposed to COVID-19 in China. **Design, Settings, and Participants:** This cross-sectional, survey-based, region-stratified study collected demographic data and mental health measurements from 1257 health care workers in 34 hospitals from January 29, 2020, to February 3, 2020, in China. Health care workers in hospitals equipped with fever clinics or wards for patients with COVID-19 were eligible. **Main Outcomes and Measures:** The degree of symptoms of depression, anxiety, insomnia, and distress was assessed by the Chinese versions of the 9-item Patient Health Questionnaire, the 7-item Generalized Anxiety Disorder scale, the 7-item Insomnia Severity Index, and the 22-item Impact of Event Scale-Revised, respectively. Multivariable logistic regression analysis was performed to identify factors associated with mental health outcomes. **Results:** A total of 1257 of 1830 contacted individuals completed the survey, with a participation rate of 68.7%. A total of 813 (64.7%) were aged 26 to 40 years, and 964 (76.7%) were women. Of all participants, 764 (60.8%) were nurses, and 493 (39.2%) were physicians; 760 (60.5%) worked in hospitals in Wuhan, and 522 (41.5%) were frontline health care workers. A considerable proportion of participants reported symptoms of depression (634 [50.4%]), anxiety (560 [44.6%]), insomnia (427 [34.0%]), and distress (899 [71.5%]). Nurses, women, frontline health care workers, and those working in Wuhan, China, reported more severe degrees of all measurements of mental health symptoms than other health care workers (eg, median [IQR] Patient Health Questionnaire scores among physicians vs nurses: 4.0 [1.0-7.0] vs 5.0 [2.0-8.0]; $P = .007$; median [interquartile range {IQR}] Generalized Anxiety Disorder scale scores among men vs women: 2.0 [0-6.0] vs 4.0 [1.0-7.0]; $P < .001$; (...)

Referência:

LAI, J. et al. Factors Associated With Mental Health Outcomes Among Health Care Workers Exposed to Coronavirus Disease 2019. **JAMA network open**, v. 3, n. 3, p. e203976, mar. 2020.

2. The emotional impact of Coronavirus 2019-nCoV (new Coronavirus disease)

Background: A novel form of Coronavirus (2019-nCoV) in Wuhan has created a confused and rapidly evolving situation. In this situational framework, patients and front-line healthcare workers are vulnerable. Method: Studies were identified using large-circulation international journals found in two electronic databases: Scopus and Embase. Results: Populations of patients that may require tailored interventions are older adults and international migrant workers. Older adults with psychiatric conditions may be experiencing further distress. The COVID-19 epidemic has underscored potential gaps in mental health services during emergencies. Conclusions: Most health professionals working in isolation units and hospitals do not receive any training for providing mental health care. Fear seems more certainly a consequence of mass quarantine.

Referência:

LIMA, C. K. T. et al. The emotional impact of Coronavirus 2019-nCoV (new Coronavirus disease). *Psychiatry Research*, maio 2020.

3. Progression of mental health services during the COVID-19 outbreak in China

The novel coronavirus disease (COVID-19) has been rapidly transmitted in China, Macau, Hong Kong, and other Asian and European counterparts. This COVID-19 epidemic has aroused increasing attention nationwide. Patients, health professionals, and the general public are under insurmountable psychological pressure which may lead to various psychological problems, such as anxiety, fear, depression, and insomnia. Psychological crisis intervention plays a pivotal role in the overall deployment of the disease control. The National Health Commission of China has summoned a call for emergency psychological crisis intervention and thus, various mental health associations and organizations have established expert teams to compile guidelines and public health educational articles/videos for mental health professionals and the general public alongside with online mental health services. In addition, mental health professionals and expert groups are stationed in designated isolation hospitals to provide on-site services. Experts have reached a consensus on the admission of patients with severe mental illness during the COVID-19 outbreak in mental health institutions. Nevertheless, the rapid transmission of the COVID-19 has emerged to mount a serious challenge to the mental health service in China.

Referência:

LI, W. et al. Progression of mental health services during the COVID-19 outbreak in China. *International Journal of Biological Sciences*, v. 16, n. 10, p. 1732–1738, 2020.

4. The effects of social support on sleep quality of medical staff treating patients with coronavirus disease 2019(COVID-19) in January and February 2020 in China

Background: Coronavirus disease 2019 (COVID-19), formerly known as severe acute respiratory syndrome coronavirus 2 (SARS-CoV-2) and 2019 novel coronavirus (2019-nCoV), was first identified in December 2019 in Wuhan City, China. Structural equation modeling (SEM) is a multivariate analysis method to determine the structural relationship between measured variables. This observational study aimed to use SEM to determine the effects of social support on sleep quality and function of medical staff who treated patients with COVID-19 in January and February 2020 in Wuhan, China. Material/Methods: A one-month cross-sectional observational study included 180 medical staff who treated patients with COVID-19 infection. Levels of anxiety, self-efficacy, stress, sleep quality, and social support were measured using the and the Self-Rating Anxiety Scale (SAS), the General Self-Efficacy Scale (GSES), the Stanford Acute Stress Reaction (SASR) questionnaire, the Pittsburgh Sleep Quality Index (PSQI), and the Social Support Rate Scale (SSRS), respectively. Pearson's correlation analysis and SEM identified the interactions between these factors. Results: Levels of social support for medical staff were significantly associated with self-efficacy and sleep quality and negatively associated with the degree of anxiety and stress. Levels of anxiety were significantly associated with the levels of stress, which negatively impacted self-efficacy and sleep quality. Anxiety, stress, and self-efficacy were mediating variables associated with social support and sleep quality. Conclusions: SEM showed that medical staff in China who were treating patients with COVID-19 infection during January and February 2020 had levels of anxiety, stress, and self-efficacy that were dependent on sleep quality and social support.

Referência:

XIAO, H. et al. The effects of social support on sleep quality of medical staff treating patients with coronavirus disease 2019(COVID-19) in January and February 2020 in China. **Medical Science Monitor**, v. 26, p. e923549, mar. 2020.

5. The impact of covid-19 epidemic declaration on psychological consequences: A study on active weibo users

COVID-19 (Corona Virus Disease 2019) has significantly resulted in a large number of psychological consequences. The aim of this study is to explore the impacts of COVID-19 on people's mental health, to assist policy makers to develop actionable policies, and help clinical practitioners (e.g., social workers, psychiatrists, and psychologists) provide timely services to affected populations. We sample and analyze the Weibo posts from 17,865 active Weibo users using the approach of Online Ecological Recognition (OER) based on several machine-learning predictive models. We calculated word frequency, scores of emotional indicators (e.g., anxiety, depression, indignation, and Oxford happiness) and cognitive indicators (e.g., social risk judgment and life satisfaction) from the collected data. The sentiment analysis and the paired sample t-test were performed to examine the differences in the same group before and after the declaration of COVID-19 on 20 January, 2020. The results showed that negative emotions (e.g., anxiety, depression and indignation) and sensitivity to social risks increased, while the scores of positive emotions (e.g., Oxford happiness) and life satisfaction decreased. People were concerned more about their health and family, while less about leisure and friends. The results contribute to the knowledge gaps of short-term individual changes in psychological conditions after the outbreak. It may provide references for policy makers to plan and fight against COVID-19 effectively by improving stability of popular feelings and urgently prepare clinical practitioners to deliver corresponding therapy foundations for the risk groups and affected people.

Referência:

LI, S. et al. The impact of covid-19 epidemic declaration on psychological consequences: A study on active weibo users. **International Journal of Environmental Research and Public Health**, v. 17, n. 6, mar. 2020.

6. Mental health care for medical staff and affiliated healthcare workers during the COVID-19 pandemic

The COVID-19 pandemic is an unprecedented challenge for society. Supporting the mental health of medical staff and affiliated healthcare workers (staff) is a critical part of the public health response. This paper details the effects on staff and addresses some of the organisational, team and individual considerations for supporting staff (pragmatically) during this pandemic. Leaders at all levels of health care organisations will find this a valuable resource.

Referência:

WALTON, M.; MURRAY, E.; CHRISTIAN, M. D. Mental health care for medical staff and affiliated healthcare workers during the COVID-19 pandemic. **European Heart Journal: Acute Cardiovascular Care**, v. 9, n. 3, p. 241–247, abr. 2020.

7. A first case of meningitis/encephalitis associated with SARS-Coronavirus-International Journal of Infectious Diseases

Novel coronavirus (SARS-Coronavirus-2:SARS-CoV-2) which emerged in Wuhan, China, has spread to multiple countries rapidly. We report the first case of meningitis associated with SARS-CoV-2 who was brought in by ambulance due to a convulsion accompanied by unconsciousness. He had never been to any foreign countries. He felt generalized fatigue and fever (day 1). He saw doctors nearby twice (day 2 and 5) and was prescribed Laninamivir and antipyretic agents, His family visited his home and found that he was unconsciousness and lying on the floor in his vomit. He was immediately transported to this hospital by ambulance (day 9). Under emergency transport, he had transient generalized seizures that lasted about a minute. He had obvious neck stiffness. The specific SARS-CoV-2 RNA was not detected in the nasopharyngeal swab but was detected in a CSF. Anti- HSV 1 and varicella-zoster IgM antibodies were not detected in serum samples. A brain MRI showed hyperintensity along the wall of right lateral ventricle and hyperintense signal changes in the right mesial temporal lobe and hippocampus, suggesting the possibility of SARS-CoV-2 meningitis. This case warns the physicians of patients who have CNS symptoms.

Referência:

MORIGUCHI, T. et al. A first case of meningitis/encephalitis associated with SARS-Coronavirus-2International Journal of Infectious Diseases, maio 2020.

8. Mental health outcomes of the CoViD-19 pandemic

The coronavirus disease 2019 (CoViD-19) caused by the novel Coronavirus strain SARS-CoV-2 is currently a pandemic. On January 30, 2020, the World Health Organization declared that the CoViD-19 outbreak is a public health emergency of international concern. The virus has already had a direct impact on the physical health of million people, and besides, it is supposed to pose a mental health threat of great magnitude globally. This review aims at synthesizing mounting evidence concerning the immediate psychological responses during the initial stage of the CoViD-19 pandemic among the general population, the health-care workers, and clinical populations. Experts point out the need to pay specific attention to other groups at risk of further distress that may need tailored interventions. Providing psychological first aid is an essential care component for populations that have been victims of emergencies and disasters, before, during and after the event. With the aim of dealing better with the urgent psychological problems of people involved in the CoViD-19 pandemic, a new psychological crisis intervention model is needed. Given the recommendation to minimize face-to-face interaction, online mental health services have been widely adopted in China and are urged in other countries.

Referência:

TALEVI, D. et al. Mental health outcomes of the CoViD-19 pandemic. *Rivista di psichiatria*, v. 55, n. 3, p. 137-144, 2020.

9. Battle Buddies: Rapid Deployment of a Psychological Resilience Intervention for Health Care Workers During the COVID-19 Pandemic

The outbreak of the coronavirus disease 2019 (COVID-19) and its rapid global spread have created unprecedented challenges to health care systems. Significant and sustained efforts have focused on mobilization of personal protective equipment, intensive care beds, and medical equipment, while substantially less attention has focused on preserving the psychological health of the medical workforce tasked with addressing the challenges of the pandemic. And yet, similar to battlefield conditions, health care workers are being confronted with ongoing uncertainty about resources, capacities, and risks; as well as exposure to suffering, death, and threats to their own safety. These conditions are engendering high levels of fear and anxiety in the short term, and place individuals at risk for persistent stress exposure syndromes, subclinical mental health symptoms, and professional burnout in the long term. Given the potentially wide-ranging mental health impact of COVID-19, protecting health care workers from adverse psychological effects of the pandemic is critical. Therefore, we present an overview of the potential psychological stress responses to the COVID-19 crisis in medical providers and describe preemptive resilience-promoting strategies at the organizational and personal level. We then describe a rapidly deployable Psychological Resilience Intervention founded on a peer support model (Battle Buddies) developed by the United States Army. This intervention—the product of a multidisciplinary collaboration between the Departments of Anesthesiology and Psychiatry & Behavioral Sciences at the University of Minnesota Medical Center—also incorporates evidence-informed “stress inoculation” methods developed for managing psychological stress exposure in providers deployed to disasters. Our multilevel, resource-efficient, and scalable approach places 2 key tools directly in the hands of providers: (1) a peer support Battle Buddy; and (2) a designated mental health consultant who can facilitate training in stress inoculation methods, provide additional support, or coordinate referral for external professional consultation. In parallel, we have instituted a voluntary research data-collection component that will enable us to evaluate the intervention’s effectiveness while also identifying the most salient resilience factors for future iterations. It is our hope that these elements will provide guidance to other organizations seeking to protect the well-being of their medical workforce during the pandemic. Given the remarkable adaptability of human beings, we believe that, by promoting resilience, our diverse health care workforce can emerge from this monumental challenge with new skills, closer relationships, and greater confidence in the power of community.

Referência:

ALBOTT, C. S. et al. Battle Buddies: Rapid Deployment of a Psychological Resilience Intervention for Health Care Workers During the COVID-19 Pandemic. *Anesthesia and analgesia*, v. 131, n. 1, p. 43–54, jul. 2020.

10. Mitigating the psychological impact of covid-19 on healthcare workers: A digital learning package

The coronavirus pandemic (COVID-19) will undoubtedly have psychological impacts for healthcare workers, which could be sustained; frontline workers will be particularly at risk. Actions are needed to mitigate the impacts of COVID-19 on mental health by protecting and promoting the psychological wellbeing of healthcare workers during and after the outbreak. We developed and evaluated a digital learning package using Agile methodology within the first three weeks of UK outbreak. This e-package includes evidence-based guidance, support and signposting relating to psychological wellbeing for all UK healthcare employees. A three-step rapid development process included public involvement activities (PPIs) (STEP 1), content and technical development with iterative peer review (STEP 2), and delivery and evaluation (STEP 3). The package outlines the actions that team leaders can take to provide psychologically safe spaces for staff, together with guidance on communication and reducing social stigma, peer and family support, signposting others through psychological first aid (PFA), self-care strategies (e.g., rest, work breaks, sleep, shift work, fatigue, healthy lifestyle behaviours), and managing emotions (e.g., moral injury, coping, guilt, grief, fear, anxiety, depression, preventing burnout and psychological trauma). The e-package includes advice from experts in mental wellbeing as well as those with direct pandemic experiences from the frontline, as well as signposting to public mental health guidance. Rapid delivery in STEP 3 was achieved via direct emails through professional networks and social media. Evaluation included assessment of fidelity and implementation qualities. Essential content was identified through PPIs (n = 97) and peer review (n = 10) in STEPS 1 and 2. The most important messages to convey were deemed to be normalisation of psychological responses during a crisis, and encouragement of self-care and help-seeking behaviour. Within 7 days of completion, the package had been accessed 17,633 times, (...)

Referência:

BLAKE, H. et al. Mitigating the psychological impact of covid-19 on healthcare workers: A digital learning package. *International Journal of Environmental Research and Public Health*, v. 17, n. 9, 2020.



Clique [aqui](#) e confira os demais artigos!

O que você achou deste Boletim?

Sua opinião é muito importante para nós!

Acesse: [boletimbibliocovid_suaopinioao](#)

Expediente

Coordenação do Projeto

Viviane Veiga (Coordenadora RBF)

Patrícia Mendes (RBF)

Adriano da Silva (CLAVES)

Gizele Ribeiro (ENSP)

Referencistas responsáveis

Martha Silveira (IGM)

Adriano da Silva (CLAVES)

Patrícia Mendes (RBF)

Apoio

Igor Bottino - Assistente Administrativo (RBF)

Letícia Ramalho - Estagiária (RBF)

Maria Eduarda Alves Teixeira - Bolsista (RBF)

Projeto gráfico e diagramação

Luciana Rocha Mariz Clua - Multimeios | Icict | Fiocruz

Ilustração BiblioCovid: Luciana Rocha Mariz Clua - Multimeios | Icict | Fiocruz

Imagens: Pixabay

Rede de Referencistas da Rede de Bibliotecas Fiocruz



Viviane Veiga
(Coord. RBF)



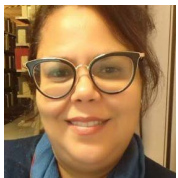
Patricia Mendes
(RBF)



Adriano da Silva
(CLAVES)



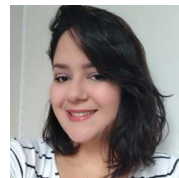
Martha Silveira
(IGM)



Gizele Ribeiro
(ENSP)



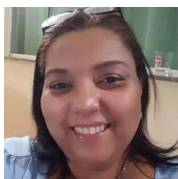
Adagilson Silva
(CPQAM)



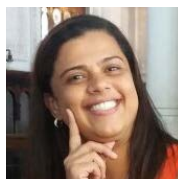
Adrienne Oliveira
(COC)



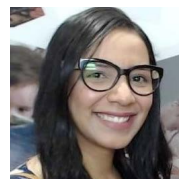
Arlete Santos
(ENSP)



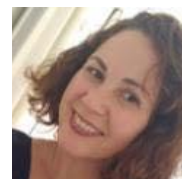
Giovania Santos
de Jesus (RBF)



Glauce de Oliveira
Pereira (ENSP)



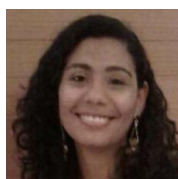
Janaína Leal
(INCQS)



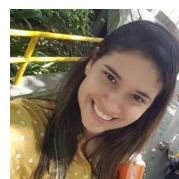
Marise Terra
Lachini (COC)



Marluce Maciel
Antelo (ENSPJV)



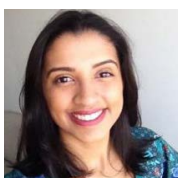
Mayara Alves
(Petrópolis)



Michelle Frazão
(FarManguinhos)



Nuzia Santos
(IRR)



Rachel Alves Pereira
Azevedo (COC)



Renata Azeredo
(ENSPJV)



Vera Queiróz
(GESTEC)